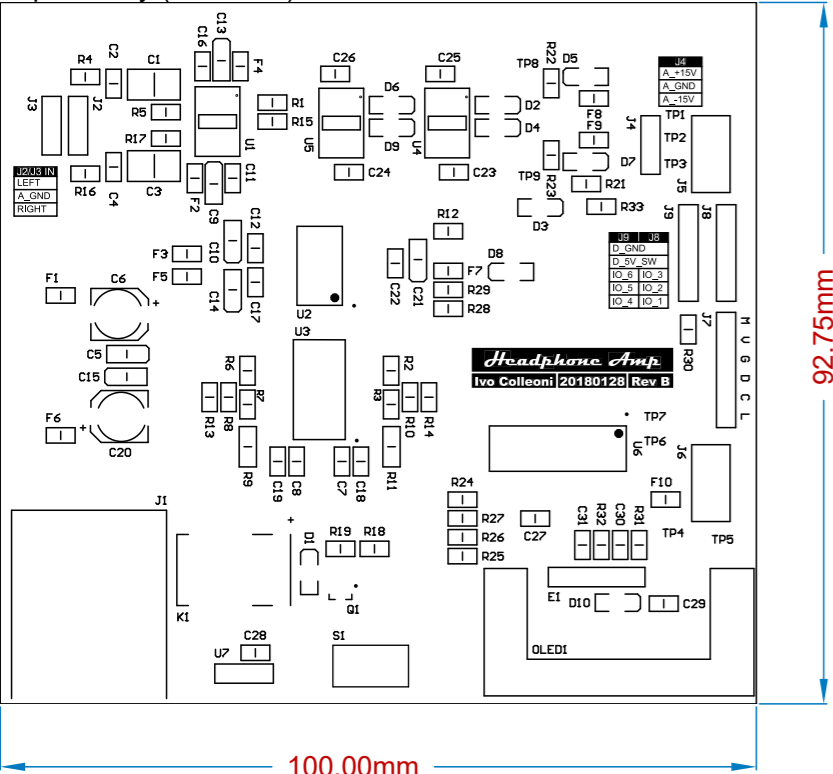
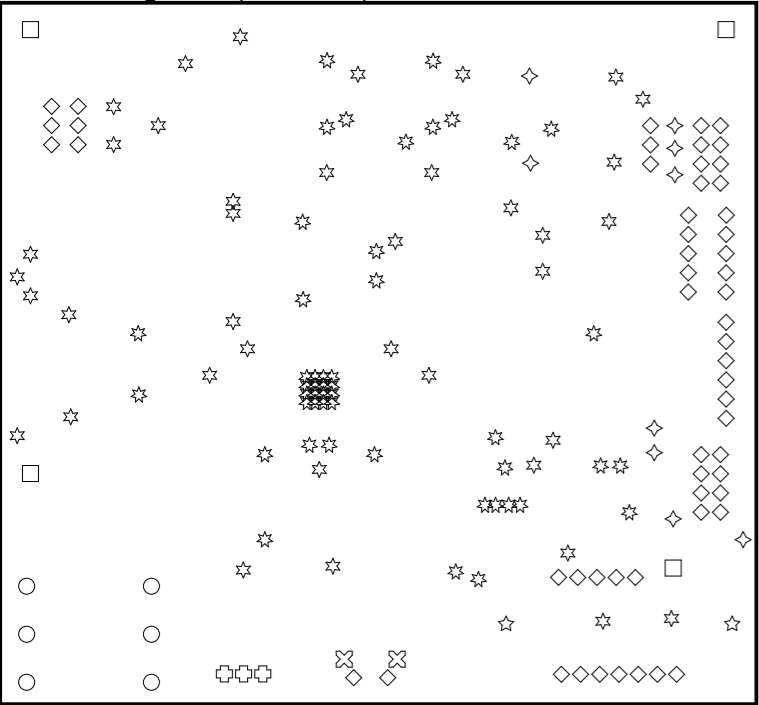


Top Overlay (Scale 1:1)



Drill Drawing View (Scale 1:1)



Drill Table

Symbol	Count	Hole Size	Plated	Hole Tolerance
☆	48	0.30	Plated	None
◇	9	0.50	Plated	None
☆	38	0.70	Plated	None
□	3	0.80	Plated	None
◇	55	0.90	Plated	None
✕	2	1.10	Plated	None
○	6	1.70	Plated	None
☆	2	2.00	Non-Plated	None
□	4	3.00	Non-Plated	None
	167 Total			

Bill Of Materials

Line #	Designator	Comment	Volt	Capacitor Type	Tollerance	Spec	Footprint	Quantity
1	C1, C3, C7, C8, C11, C12, C16, C17, C18, C19, C22, C23, C24, C25, C26, C27, C28, C29	100nF	50V			PPS, X7R	CAP_1913, CAP_0805	18
2	C2, C4	220pF	50V			PPS	CAP_0805	2
3	C5, C9, C10, C13, C14, C15, C21	10uF	20V	Tant.			CAP_POL_1206	7
4	C6, C20	100uF	25V	Elect.			CAP_SMD_6	2
5	C30, C31	10nF	50V			X7R	CAP_0805	2
6	D1, D2, D4, D6, D8, D9, D10	1N4148W					SOD-123	7
7	D3, D5, D7	DZ2W04300L	4V3				SOD-123	3
8	E1	EC11B15242AF					CON_5_ENC	1
9	F1, F2, F3, F4, F5, F6, F7, F8, F9, F10	MPZ2012S331A					FE_0805	10
10	J1	Jack 6.35mm					CL12327	1
11	J2	IN_B					CON_3	1
12	J3	IN_A					CON_3	1
13	J4	PSU_A_EXT					CON_3	1
14	J5	PSU_A_M					CON_4x2_M	1
15	J6	PSU_D_M					CON_4x2_M	1
16	J7	Program					Con_6_PicKit_III	1
17	J8	DIG_SEL					CON_5	1
18	J9	DIG_SEL_2					CON_5	1
19	K1	TX2SA					TX2SA	1
20	M3 1, M3 2, M3 3, M3 4	Screw					SCREW M3	4
21	OLED1	OLED SSD1306					OLED_SSD1306_V_1.3	1
22	Q1	BC817					SOT23	1
23	R1, R8, R10, R15	49.9R			1%		RES_0805	4
24	R2, R3, R6, R7	1K			1%		RES_0805	4
25	R4, R16	8K2			1%		RES_0805	2
26	R5, R17	820K			1%		RES_0805	2
27	R9, R11	10R			1%		RES_1206	2
28	R12, R24, R25, R26, R27, R28, R29	10K			5%		RES_0805	7
29	R13, R14	4.02K			1%		RES_0805	2
30	R18	4K7			5%		RES_0805	1
31	R19	33K			5%		RES_0805	1
32	R20	0R					RES_1206	1
33	R21	1K2			5%		RES_0805	1
34	R22, R23	3K3			5%		RES_0805	2
35	R30	5K6			5%		RES_0805	1
36	R31, R32	2K2			5%		RES_0805	2
37	R33	100K			5%		RES_0805	1
38	S1	SW-PB					TACTSWITCHES 90	1
39	TP1, TP2, TP3, TP4, TP5, TP6, TP7, TP8, TP9	=name					TEST POINT	9
40	U1	OPA1612					SOIC8	1
41	U2	PGA2320					SOIC16 - DW	1
42	U3	TPA6120A2DWP					HSOP20	1
43	U4, U5	OPA2134					SOIC8	2
44	U6	PIC18F26K22-I/Sx					SOIC28	1
45	U7	TSOP34836					TSOP348	1