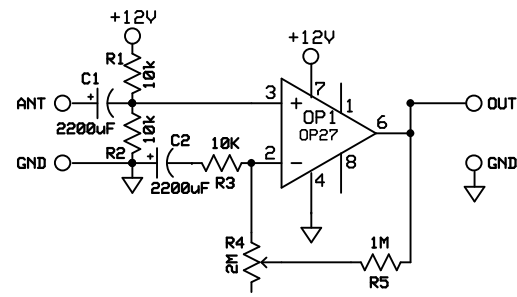


OFFSET

OP27GP voltage input = 30-100 μ V (noise = 3,8-8 nV/sqrtHz at 10Hz)
OP27GP current input = 12-75nA (noise = 1,7pA/sqrtHz at 10 Hz)
OP27A voltage input = 10-25 μ V (noise = 3,5-5,5nV/sqrtHz at 10 Hz)
OP27A current input = 7-35nA (noise = 1,7-4pA/sqrtHz at 10 Hz)



40-49,5 dB (100-300 \times) GAIN